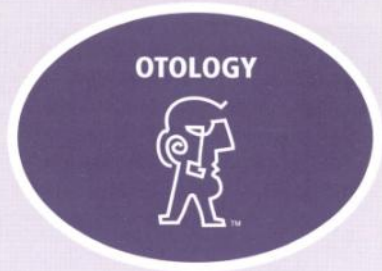


Ventilation Tubes

Dozens of designs, six different materials and convenient packaging choices... there are Micromedics vent tubes to meet nearly any surgical requirement!

Our rigorous process control and superior quality management have earned Micromedics a reputation for unmatched excellence since 1982. ENT professionals throughout the world specify Micromedics' tympanostomy tubes.



Superior Quality and Comprehensive Selection!

We invite your side-by-side comparison of Micromedics' implantable ENT surgical products to our competitors. Our first-rate excellence will show through. In addition, we back up our quality products with solid customer service to contribute to your surgical success.

Micromedics Tympanostomy Tubes

Tube	Page
Angled Tab Bobbin	2
Armstrong Beveled Straight Shank	2
Armstrong Grommet	2
Modified Armstrong Grommet	2
Baxter Bevel Button	2
Bevel Bobbin	3
Collar Button	3
Donaldson	3
Feuerstein Split	3
Mini-Grommet	4
Mini-Tef	4
Paparella	4
Pope Beveled Grommet	4
Reuter Bobbin With Holes	5
Reuter Bobbin Without Holes	5
Shah	5
Shepard	5
Shoehorn Bobbin With Holes	6
Shoehorn Bobbin Without Holes	6
Spooner	6
Straight Shank	6
Tiny Touma	7
T-Tube	7
Grommet T-Tube	7
Touma T-Tube	7
Touma II	7
T-Tube Inserter	8
Umbrella	8

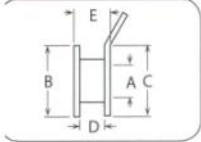


Call 1-800-624-5662 Today to Order
Micromedics...where good ideas build great products!

Angled Tab Bobbin

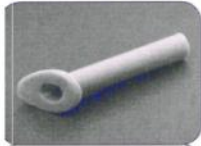


The angled tab projects from the outer flange to facilitate insertion with improved visualization. The design is available with and without a wire.

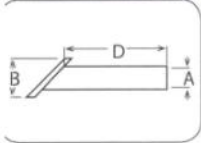


Catalog Number	Feature	Material	A Inner Dia.	B Inner Flange Dia.	C Outer Flange Dia.	D Inter Flange Dist.	E Total Length
VT-1420-*	w/Wire	TT	1.27	2.7	2.7	1.0	1.5
VT-1421-*		TT	1.27	2.7	2.7	1.0	1.5

Armstrong Beveled Straight Shank



The angle of the beveled inner flange corresponds to the angle of the tympanic membrane for easier insertion, resistance to premature extrusion and visibility through the lumen.

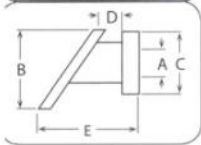


Catalog Number	Feature	Material	A Inner Dia.	B Inner Flange Dia.	C Outer Flange Dia.	D Inter Flange Dist.	E Total Length
VT-0500-*	7.0mm	SI/BL	1.14	2.6		7.0	
VT-0501-*	7.5mm	FP/BL	1.14	2.6		7.5	

Armstrong Grommet



Beveled inner flange corresponds to the angle of the tympanic membrane for easier insertion, extrusion resistance and visibility through the lumen. Outer flange adds security.

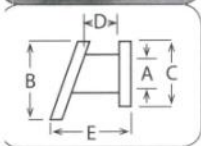


Catalog Number	Feature	Material	A Inner Dia.	B Inner Flange Dia.	C Outer Flange Dia.	D Inter Flange Dist.	E Total Length
VT-0503-*		FP/BL	1.14	2.5	2.4	1.0	4.0
VT-0507-*	w/Wire	FP/BL	1.14	2.5	2.4	1.0	4.0

Modified Armstrong Grommet



Modified angle facilitates insertion into the myringotomy.

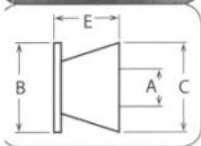


Catalog Number	Feature	Material	A Inner Dia.	B Inner Flange Dia.	C Outer Flange Dia.	D Inter Flange Dist.	E Total Length
VT-0508-*		FP/BL	1.14	3.07	2.59	1.29	3.07

Baxter Bevel Button

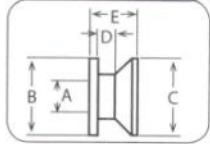


The beveled shape resists occlusion and clears easily. It permits improved visibility through the lumen. The smaller models are especially useful for small ear canal or pediatric applications.



Catalog Number	Feature	Material	A Inner Dia.	B Inner Flange Dia.	C Outer Flange Dia.	D Inter Flange Dist.	E Total Length
VT-0602-*		FP/W	1.27	3.0	3.0		2.2
VT-0603-*	Mini	FP/W	0.89	2.3	2.3		1.6
VT-0604-*	w/Wire	FP/W	1.27	3.0	3.0		2.2
VT-0606-*		SI/BL	1.27	3.0	3.0		2.2
VT-0607-*	Mini	SI/BL	0.89	2.3	2.3		1.6

Bevel Bobbin

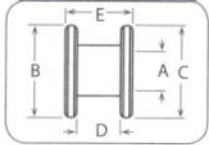


Combining the best features of the Baxter Bevel Button and the Reuter Bobbin, the beveled shape resists occlusion and clears easily.

Bevel Bobbin Specifications

Catalog Number	Feature	Material	A Inner Dia.	B Inner Flange Dia.	C Outer Flange Dia.	D Inter Flange Dist.	E Total Length
VT-0608-*	Bevel Bobbin	FP/W	1.14	2.79	2.79	.66	1.75

Collar Button



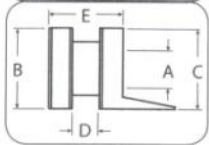
Available in fluoroplastic, silicone or titanium, with or without wire, and two inner lumen diameters.

These large inner diameter models offer increased drainage and ventilation. Similar to Reuter Bobbin without holes.

Collar Button Specifications

Catalog Number	Feature	Material	A Inner Dia.	B Inner Flange Dia.	C Outer Flange Dia.	D Inter Flange Dist.	E Total Length
VT-1000-*	w/Wire	FP/W	1.27	2.9	2.9	1.4	2.1
VT-1001-*		FP/W	1.27	2.9	2.9	1.4	2.1
VT-1002-*		SI/BL	1.27	2.84	2.84	1.43	2.03
VT-1030-*	w/Wire	TT	1.27	2.9	2.9	1.4	2.0
VT-1031-*		TT	1.27	2.9	2.9	1.4	2.0
VT-1034-*	w/Wire	TT	1.50	2.9	2.9	1.4	2.0
VT-1035-*		TT	1.50	2.9	2.9	1.4	2.0

Donaldson

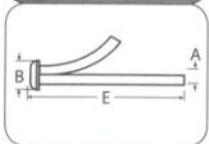


The large lumen offers good ventilation and the dual-flange design resists migration and extrusion. Available with a tab for insertion and removal convenience.

Donaldson Specifications

Catalog Number	Feature	Material	A Inner Dia.	B Inner Flange Dia.	C Outer Flange Dia.	D Inter Flange Dist.	E Total Length
VT-0100-*		SI/BL	1.14	2.4	2.4	0.8	2.2
VT-0101-*	w/Tab	SI/BL	1.14	2.4	2.4	0.8	2.2
VT-0102-*		FP/W	1.14	2.4	2.4	0.8	2.2

Feuerstein Split



The split tube is designed for improved resistance to both extrusion and migration. The smaller inner flange offers easier insertion in small incisions.

Feuerstein Split Specifications

Catalog Number	Feature	Material	A Inner Dia.	B Inner Flange Dia.	C Outer Flange Dia.	D Inter Flange Dist.	E Total Length
VT-0904-*	12mm	FP/W	1.14	2.2			12.0

All dimensions are in millimeters.

Material Abbreviation Key

Code	Description	Code	Description
FP/BL	Fluoroplastic/Blue	SI/BL	Silicone/Blue
FP/W	Fluoroplastic/White	SS	Stainless Steel
PE/BL	Polyethylene/Blue	TT	Titanium

See back of brochure for details on materials.

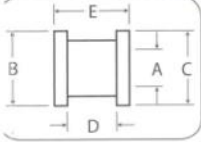
* Suffix -01 after the catalog number indicates 1 tube per sterile package, 6 packages per dispenser box.

Suffix -50 after the catalog number indicates 1 tube per sterile package, 50 packages per dispenser box.

Mini-Grommet



Dimensioned for pediatric, small ear canal and tortuous ear canal applications. Mini-Grommet tubes are precision-machined from lightweight, certified titanium.



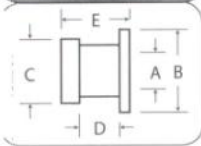
Mini-Grommet Specifications

Catalog Number	Feature	Material	A Inner Dia.	B Inner Flange Dia.	C Outer Flange Dia.	D Inter Flange Dist.	E Total Length
VT-1425-*		TT	0.76	1.5	1.5	1.0	1.5

Mini-Tef



Dimensioned for pediatric, small ear canal and tortuous ear canal applications. Mini-Tef tubes are constructed of white fluoroplastic and feature a larger diameter inner flange.



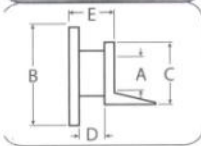
Mini-Tef Specifications

Catalog Number	Feature	Material	A Inner Dia.	B Inner Flange Dia.	C Outer Flange Dia.	D Inter Flange Dist.	E Total Length
VT-1602-*		FP/W	0.89	2.0	1.6	1.0	1.5

Paparella



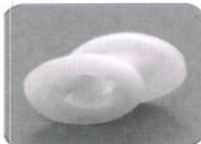
Available in two inner lumen and flange sizes (Types I and II), the notched inner flange is designed for a "twist-in" insertion in a smaller incision.



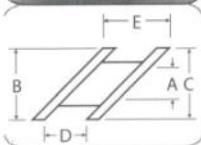
Paparella Specifications

Catalog Number	Feature	Material	A Inner Dia.	B Inner Flange Dia.	C Outer Flange Dia.	D Inter Flange Dist.	E Total Length
VT-0300-*	Type I	SI/BL	1.14	2.4	2.1	1.1	2.2
VT-0301-*	Type II	SI/BL	1.42	4.4	2.7	1.1	2.2

Pope Beveled Grommet



The angle and style of the flanges permit passage of the tubes through smaller speculums. The angled flanges offer improved direct visibility through the tube lumen.



Pope Beveled Grommet Specifications

Catalog Number	Feature	Material	A Inner Dia.	B Inner Flange Dia.	C Outer Flange Dia.	D Inter Flange Dist.	E Total Length
VT-1504-*		PE/BL	1.14	2.6	2.6	1.1	1.7
VT-1505-*	w/Wire	PE/BL	1.14	2.6	2.6	1.1	1.7

All dimensions are in millimeters.

Material Abbreviation Key

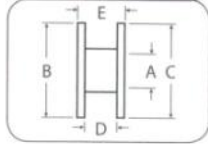
Code	Description	Code	Description
FP/BL	Fluoroplastic/Blue	SI/BL	Silicone/Blue
FP/W	Fluoroplastic/White	SS	Stainless Steel
PE/BL	Polyethylene/Blue	TT	Titanium

See back of brochure for details on materials.

* Suffix -01 after the catalog number indicates 1 tube per sterile package, 6 packages per dispenser box.

Suffix -50 after the catalog number indicates 1 tube per sterile package, 50 packages per dispenser box.

Reuter Bobbin With Holes

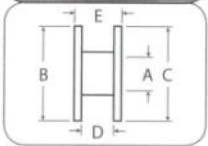


The larger flange diameters encourage longer-term retention. The design is available with and without wire in a variety of materials and lumen diameters.

Reuter Bobbin With Holes Specifications

Catalog Number	Feature	Material	A	B	C	D	E
			Inner Dia.	Inner Flange Dia.	Outer Flange Dia.	Inter Flange Dist.	Total Length
VT-1200-*	w/Wire	SS	1.00	2.8	2.8	1.0	1.4
VT-1201-*		SS	1.00	2.8	2.8	1.0	1.4
VT-1202-*		FP/W	1.00	2.8	2.8	1.0	1.5
VT-1205-*		SS	1.14	2.8	2.8	1.0	1.4
VT-1206-*		SS	1.27	2.8	2.8	1.0	1.4
VT-1208-*	w/Wire	SS	1.14	2.8	2.8	1.0	1.4
VT-1220-*	w/Wire	TT	1.00	2.8	2.8	1.0	1.4
VT-1221-*		TT	1.00	2.8	2.8	1.0	1.4
VT-1222-*	w/Wire	TT	1.14	2.8	2.8	1.0	1.4
VT-1223-*		TT	1.14	2.8	2.8	1.0	1.4
VT-1225-*		TT	1.27	2.8	2.8	1.0	1.4

Reuter Bobbin Without Holes

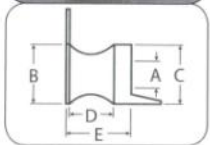


The larger flange diameters encourage longer-term retention. The short flange model is designed to pass through smaller speculums. Available in three lumen diameters. Design is similar to Collar Button design.

Reuter Bobbin Without Holes Specifications

Catalog Number	Feature	Material	A	B	C	D	E
			Inner Dia.	Inner Flange Dia.	Outer Flange Dia.	Inter Flange Dist.	Total Length
VT-1203-*		FP/W	1.00	2.8	2.8	1.0	1.5
VT-1204-*		FP/W	1.14	2.8	2.8	1.0	1.5
VT-1207-*		FP/W	1.00	2.59	2.59	0.97	1.3
VT-1230-*		TT	1.00	2.8	2.8	1.0	1.4
VT-1231-*		TT	1.14	2.8	2.8	1.0	1.4
VT-1232-*		TT	1.27	2.8	2.8	1.0	1.4
VT-1233-*	Satin Finish	TT	1.14	2.8	2.0	1.0	1.4

Shah

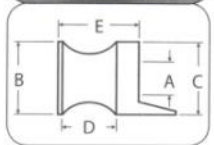
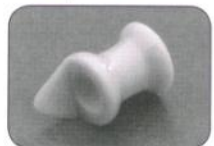


The tab on the outer flange facilitates insertion and better resists extrusion. The Mini-Shah (VT-0805-*) is useful for small ear canal or pediatric applications.

Shah Specifications

Catalog Number	Feature	Material	A	B	C	D	E
			Inner Dia.	Inner Flange Dia.	Outer Flange Dia.	Inter Flange Dist.	Total Length
VT-0802-*	w/Tab	FP/W	1.14	2.4	2.4		2.5
VT-0803-*	w/Wire	FP/W	1.14	2.4	2.4		2.5
VT-0804-*	w/o Tab	FP/W	1.14	2.4	2.4		2.5
VT-0805-*	w/Wire	FP/W	0.76	1.7	1.7		2.0

Shepard

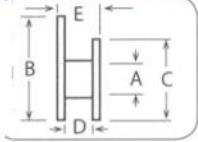
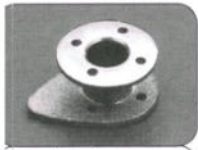


Ease of insertion with forceps or a tube inserter have led to this design's popularity. Available in silicone with a tab or in fluoroplastic with and without wire.

Shepard Specifications

Catalog Number	Feature	Material	A	B	C	D	E
			Inner Dia.	Inner Flange Dia.	Outer Flange Dia.	Inter Flange Dist.	Total Length
VT-0200-*	w/Tab	SI/BL	1.00	2.4	2.4	1.6	2.4
VT-0201-*	w/Wire	FP/W	1.14	2.4	2.4	1.6	2.4
VT-0202-*		FP/W	1.14	2.4	2.4	1.6	2.4
VT-0203-*	w/Wire	FP/W	1.00	2.4	2.4	1.6	2.4
VT-0204-*		FP/W	1.00	2.4	2.4	1.6	2.4
VT-0205-*	Wrapped Wire	FP	1.14	2.4	2.4	1.6	2.4
VT-0206-*	Wrapped Wire	FP	1.00	2.4	2.4	1.6	2.4

Shoehorn Bobbin With Holes

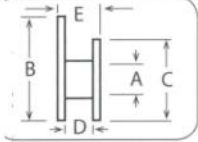
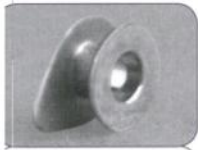


The “shoehorn” tab on the inner flange facilitates insertion and better resists extrusion. Available with or without wire, two materials and two lumen diameters.

Shoehorn Bobbin With Holes Specifications

Catalog Number	Feature	Material	A	B	C	D	E
			Inner Dia.	Inner Flange Dia.	Outer Flange Dia.	Inter Flange Dist.	Total Length
VT-1400-*	w/Wire	SS	1.00	2.8	2.8	1.0	1.5
VT-1401-*		SS	1.00	2.8	2.8	1.0	1.5
VT-1402-*	w/Wire	SS	1.14	2.8	2.8	1.0	1.5
VT-1403-*		SS	1.14	2.8	2.8	1.0	1.5
VT-1410-*	w/Wire	TT	1.00	2.8	2.8	1.0	1.5
VT-1411-*		TT	1.00	2.8	2.8	1.0	1.5
VT-1412-*	w/Wire	TT	1.14	2.8	2.8	1.0	1.5
VT-1413-*		TT	1.14	2.8	2.8	1.0	1.5

Shoehorn Bobbin Without Holes

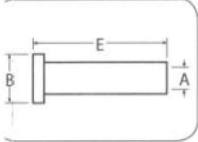


The “shoehorn” tab on the inner flange facilitates insertion and better resists extrusion. The large lumen diameter offers increased ventilation and resists occlusion.

Shoehorn Bobbin Without Holes Specifications

Catalog Number	Feature	Material	A	B	C	D	E
			Inner Dia.	Inner Flange Dia.	Outer Flange Dia.	Inter Flange Dist.	Total Length
VT-1417-*		TT	1.27	2.8	2.8	1.0	1.5

Spooner

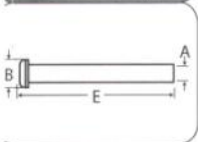
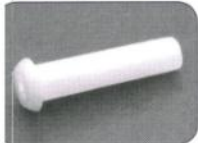


A straight shank design, this tube is constructed of blue polyethylene for smooth surface characteristics and reduced likelihood of clogging. It may be trimmed to length.

Spooner Specifications

Catalog Number	Feature	Material	A	B	C	D	E
			Inner Dia.	Inner Flange Dia.	Outer Flange Dia.	Inter Flange Dist.	Total Length
VT-0910-*		PE/BL	1.19	2.6			7.3

Straight Shank



Smaller inner flange facilitates insertion in a smaller incision. May be cut to length. Longer shaft lengths may help resist water migration into the middle ear.

Straight Shank Specifications

Catalog Number	Feature	Material	A	B	C	D	E
			Inner Dia.	Inner Flange Dia.	Outer Flange Dia.	Inter Flange Dist.	Total Length
VT-0900-*	12mm	FP/W	1.14	2.2			12.0
VT-0901-*	7mm	FP/W	1.14	2.2			7.0
VT-0902-*	12mm	FP/W	0.89	2.2			12.0
VT-0903-*	7mm	FP/W	0.89	2.2			7.0

All dimensions are in millimeters.

Material Abbreviation Key

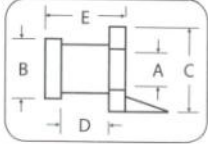
Code	Description	Code	Description
FP/BL	Fluoroplastic/Blue	SI/BL	Silicone/Blue
FP/W	Fluoroplastic/White	SS	Stainless Steel
PE/BL	Polyethylene/Blue	TT	Titanium

See back of brochure for details on materials.

* Suffix -01 after the catalog number indicates 1 tube per sterile package, 6 packages per dispenser box.

Suffix -50 after the catalog number indicates 1 tube per sterile package, 50 packages per dispenser box.

Tiny Touma

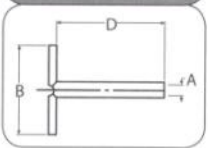


Dimensioned for pediatric, small ear canal and tortuous ear canal applications. Tiny Touma tubes are constructed of blue silicone and feature a tab for convenient handling.

Tiny Touma Specifications

Catalog Number	Feature	Material	A Inner Dia.	B Inner Flange Dia.	C Outer Flange Dia.	D Inter Flange Dist.	E Total Length
VT-1601-*		SI/BL	0.89	1.6	2.2	1.3	2.1

T-Tube

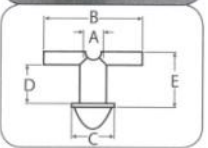


Most often used for longer-term ventilation, the flexible flanges permit insertion through a smaller incision, stable positioning in the tympanic membrane and easy removal.

T-Tube Specifications

Catalog Number	Feature	Material	A Inner Dia.	B Inner Flange Dia.	C Outer Flange Dia.	D Inter Flange Dist.	E Total Length
VT-0400-*	12x10	SI/BL	1.14	9.8		12.0	
VT-0401-*	5x8	SI/BL	1.14	7.9		4.8	
VT-0406-*	5x4	SI/BL	1.14	4.1		4.8	
VT-0407-*	8x5.5	SI/BL	1.14	5.6		8.0	

Grommet T-Tube

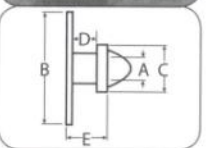


Retaining the advantages of conventional T-Tubes, this larger-lumen design adds a butterfly-shaped grommet with integral tab for ease of insertion and removal.

Grommet T-Tube Specifications

Catalog Number	Feature	Material	A Inner Dia.	B Inner Flange Dia.	C Outer Flange Dia.	D Inter Flange Dist.	E Total Length
VT-0403-*		SI/BL	1.27	6.4	3.8	2.4	3.5

Touma T-Tube

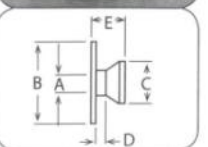


This compact length, longer-term design features flat T-type inner flanges and an outer grommet with integral tab for ease of insertion and removal.

Touma T-Tube Specifications

Catalog Number	Feature	Material	A Inner Dia.	B Inner Flange Dia.	C Outer Flange Dia.	D Inter Flange Dist.	E Total Length
VT-0405-*		SI/BL	1.14	5.8	2.4	1.3	2.1

Touma II T-Tube



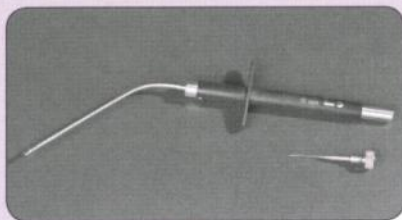
The funnel design and shorter shaft reduces clogging and enhances visibility. Longer flanges promote longer-term retention.

Touma II T-Tube Specifications

Catalog Number	Feature	Material	A Inner Dia.	B Inner Flange Dia.	C Outer Flange Dia.	D Inter Flange Dist.	E Total Length
VT-0408-*		SI/BL	1.12	5.0	2.59	0.63	2.08

T-Tube Inserter

This reusable instrument facilitates rapid insertion of any length T-Tube. Special push-pin stored in the handle aids in loading T-Tubes.



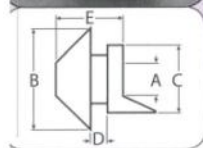
T-Tube Inserter Specifications

Product Number	Description	Sale Unit
13-31-40	T-Tube Inserter. Easy to load for precise control and insertion of T-Tubes. Non-sterile, reusable.	1 Inserter

Umbrella



Available in two lumen and flange sizes (Types I and II), the inner flange collapses during insertion through a smaller incision and inverts for convenient removal.



Umbrella Specifications

Catalog Number	Feature	Material	Dimensions				
			A	B	C	D	E
VT-0700-*	Type I	SI/BL	Inner Dia. 1.00	Inner Flange Dia. 2.3	Outer Flange Dia. 2.3	Inter Flange Dist. 0.8	Total Length 3.2
VT-0701-*	Type II	SI/BL	Inner Dia. 1.50	Inner Flange Dia. 4.8	Outer Flange Dia. 3.2	Inter Flange Dist. 0.8	Total Length 3.2
VT-0702-*	Type I	SI/BL w/Wire	Inner Dia. 1.00	Inner Flange Dia. 2.3	Outer Flange Dia. 2.3	Inter Flange Dist. 0.8	Total Length 3.2

Micromedics Ventilation Tube Designs and Materials

Material	Code	Description
Fluoroplastic	FP/BL (Blue) FP/W (White)	Inert, biocompatible and very smooth. The rigid material facilitates tube insertion and its nonstick characteristics may reduce adhesion formation and/or clogging. Teflon (a registered trademark of E.I. DuPont de Nemours & Co.) is one brand of fluoroplastic. Micromedics uses only 100% certified virgin material, certified in accordance with ASTM D1710-81 Type 1, Grade 1.
Polyethylene	PE/BL (Blue)	Features proven biocompatibility and a smooth surface, which reduces or prevents clogging of the lumen during the early post-implant period. Micromedics uses only 100% certified virgin material.
Silicone Elastomer	SI/BL (Blue)	Extremely soft, compliant and elastic. It is easily manipulated, extremely lubricious, and vent tubes may be easily compressed for insertion or removal. Micromedics uses 100% certified medical grade silicone resin.
Stainless Steel	SS	Extremely durable and resistant to corrosion and attack by body fluids. Stainless steel has a long-proven history of biocompatibility with high strength. Its rigidity facilitates insertion. Micromedics uses 100% certified ASTM 138 stainless steel.
Titanium E	TT	Extremely durable and is but one-half the weight of stainless steel. Extremely resistant to corrosion and attack by body fluids, titanium has excellent biocompatibility. Its rigidity facilitates insertion. Micromedics uses 100% certified ASTM F136-79 titanium.

novimed
Medizintechnik

Novimed AG Medizintechnik Heimstrasse 46 CH-8953 Dietikon
Telefon +41 (0)44 743 40 60 Telefax +41 (0)44 743 40 65
info@novimed.ch www.novimed.ch

Call 1-800-624-5662 Today to Order
Micromedics... where good ideas build great products!

Micromedics, Inc. • www.micromedics.com
1270 Eagan Industrial Road • St. Paul, MN 55121-1385 USA
toll free US: 1-800-624-5662 • **toll free fax:** 1-888-504-0606
local: 651-452-1977 • **local fax:** 651-452-1787

©2007 Micromedics, Inc. All rights reserved.

M-ENT-0002/E